



Bulletin Number: 88-7-17
 Reference Number: 877208
 Publish Date: 2/88

PONTIAC DIVISION

'88



Dealer
 Service
 Bulletin



Subject:

PROPER SERVICE FLUID FOR MANUAL
 TRANSAXLE/TRANSMISSION 1986 1/2 -
 1988 HM-282 (MG1 AND MG2)
 1988 HM-290 (MC0 AND MG5)

**Models
 Affected:**

HM-282 - ALL
 HM-290 - ALL

6000, SUNBIRD, GRAND AM, FIERO AND GRAND
 PRIX MODELS

BULLETIN COVERS:

Proper service fluid for the HM-282 and HM-290 is important to prevent gear clash and/or increased shift effort.

DATE OF PRODUCTION CHANGE: (Figures 1 and 2)

For the 1988 model year the HM-282 5-speed manual transaxle is factory filled with synchromesh transmission fluid (STF). This new fluid aids in reducing cold shift effort in this application.

SERVICE ACTION:

Reference chart below for the proper service fluid.

MODEL	MODEL YEAR	FLUID NAME	GM SERVICE PART NUMBER
HM-282	1986 1/2 1987 1988	(PREFERRED SEE NOTE 1) SYNCHROMESH TRANSMISSION FLUID	12345349 (QTS.) .946 L
		(OPTIONAL SEE NOTE 2) MANUAL TRANSMISSION FLUID	01052931 (QTS.) .946 L
HM-290	1988	MANUAL TRANSMISSION FLUID	01052931 (QTS.) .946 L

CONTINUED

Pontiac bulletins are intended for use by professional technicians, NOT a "do-it-yourselfer." They are written to inform these technicians of conditions that may occur on some vehicles, or to provide information that could assist in the proper service of a vehicle. Properly trained technicians have the equipment, tools, safety instructions, and know-how to do a job properly and safely. If a condition is described, DO NOT assume that the bulletin applies to your vehicle, or that your vehicle will have that condition. See your Pontiac dealer for information on whether your vehicle may benefit from the information.

Read, Initial & Pass On

• Service Supervision

• Parts

• Accounting

- NOTE:
- 1) It is permissible and preferred to use synchromesh transmission fluid (STF) in past model HM-282 transaxles. STF will aid in reducing cold shift effort.
 - 2) Synchromesh transmission fluid (STF) can be mixed with manual transmission fluid, but as the portion of manual transmission fluid increases, so does the shift effort.

IMPORTANT: DO NOT REFILL THE HM-282 OR HM-290 WITH ENGINE OIL OR AUTOMATIC TRANSMISSION FLUID. THESE HAVE DIFFERENT FRICTION COEFFICIENTS AND DO NOT WORK WELL WITH THE SYNCHRONIZERS, CAUSING GEAR CLASH AND/OR INCREASED SHIFT EFFORT.

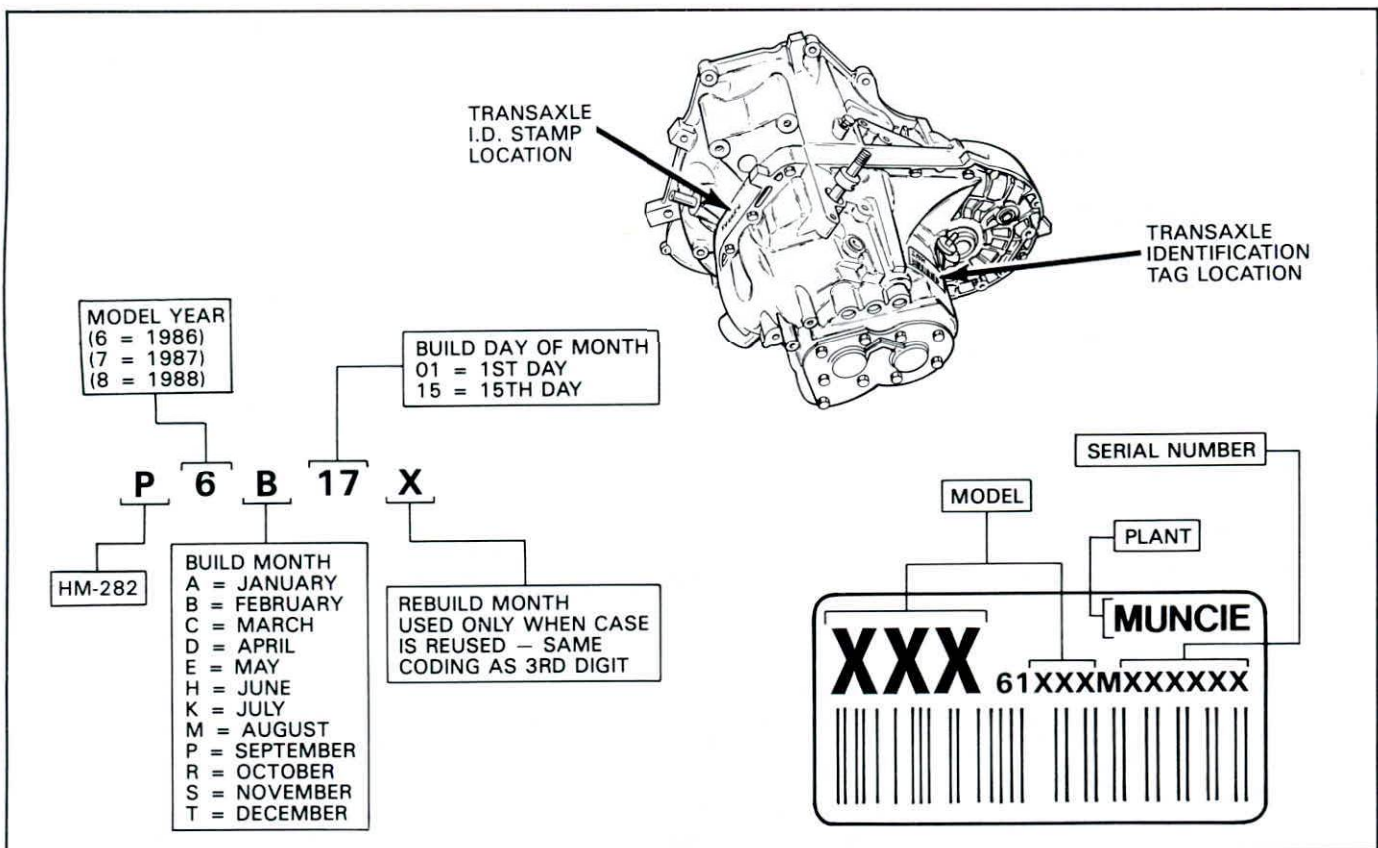


Figure 1 — HM-282 Transaxle Identification Information
RPO MG1/MG2

CONTINUED

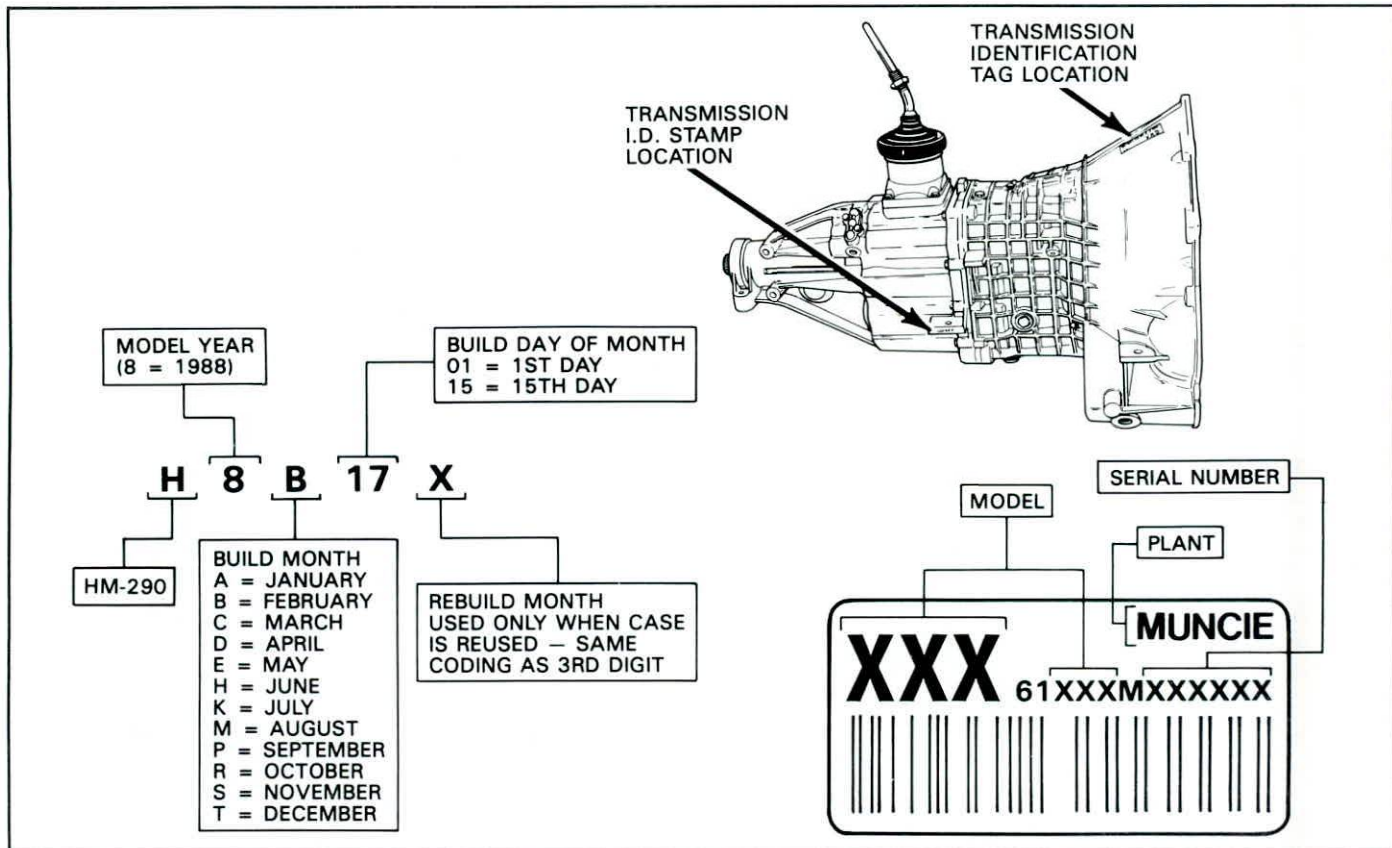


Figure 2 — HM-290 Transmission Identification Information
RPO MC0/MG5

SERVICE DEPARTMENT
PONTIAC DIVISION
GENERAL MOTORS CORPORATION

